

R8826 (H827, H2000)

Original Instructions

IM-R8826 (H827, H2000)-EN
Iss: 07/2023



GENERAL WARNINGS & DISPOSAL



To reduce the risk of injury, the user must read the instruction manual.



This symbol is used throughout this manual to warn the user about potential risks. Please read & understand these sections before using the device.



Caution! Wear ear-muffs. The impact of noise can cause damage to hearing.



Caution! Wear protective safety gloves.



Caution! Wear safety goggles. Sparks generated during working or splinters, chips and dust emitted by the device can cause loss of sight. wood and other materials. Never use the device to work on any materials containing asbestos!



Caution! Wear a breathing mask. Dust which is injurious to health can be generated when working on wood and other materials. Never use the device to work on any materials containing asbestos!

The month and year of manufacture can be found within the product serial number e.g. MMYYPXXAXXXXX. Where production month (MM) and production year (YY) are included.

Contents

INTRODUCTION	4
SPECIFICATIONS	4
DESCRIPTIONS	4
COMPONENT PARTS	5
IMPORTANT SAFETY INSTRUCTIONS	6
OPERATING INSTRUCTIONS	6
ADJUSTMENT	6
TROUBLESHOOTING	7
WARNING	7
WARRANTY STATEMENT	9-10
DECLARATION OF CONFORMITY	11



INTRODUCTION

For your safety, please read this manual before using any lifting equipment ensuring you fully understand its operation and the safety procedures to be observed. Ensure this manual is retained for future reference and that new users of this product read and understand the content before they use the product.

SPECIFICATIONS

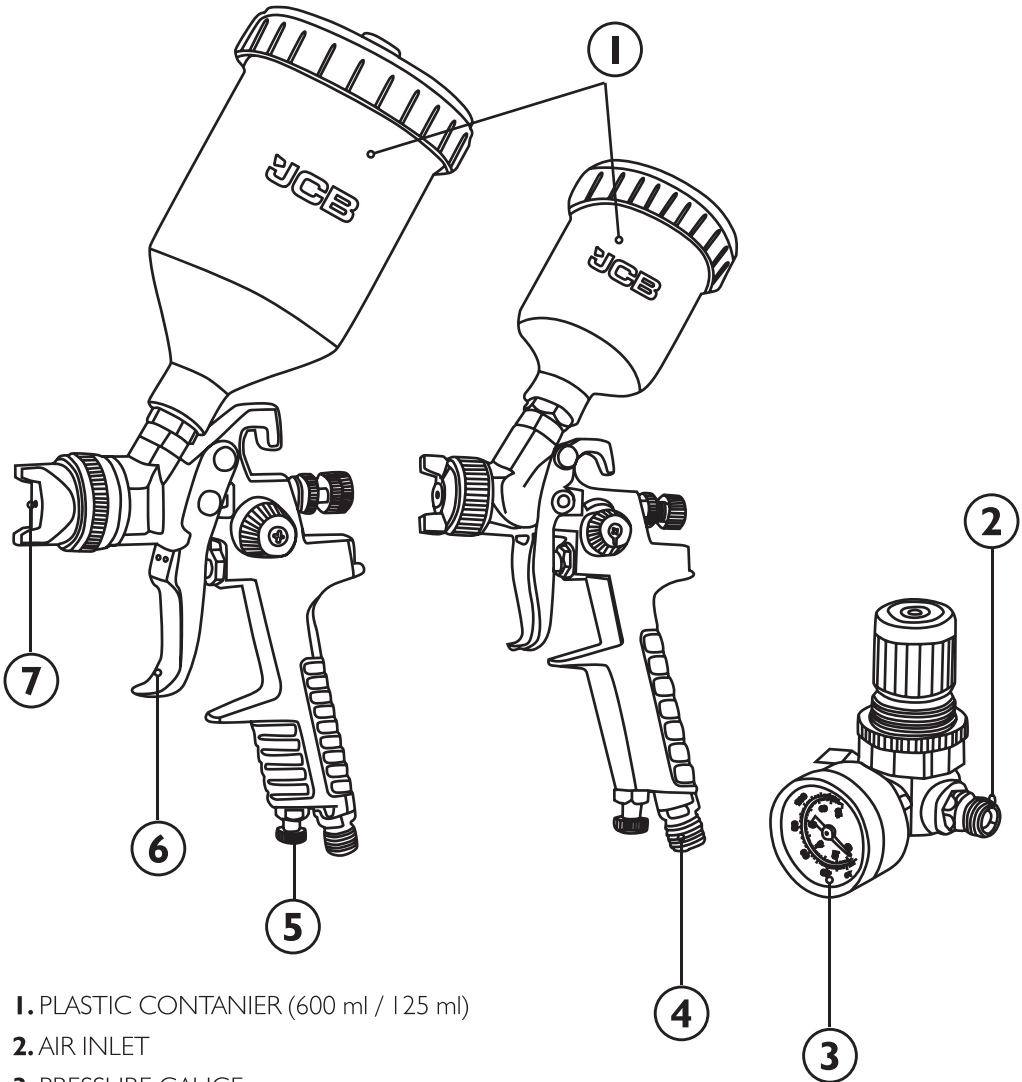
Ipc Model No	H827
Nozzle	1.4mm
Operating Pressure	2.0-3.5bar
Pattern Width	180-250mm
Air Consumption	240-300 L/m
Paint Capacity	600cc

Ipc Model No	H2000
Type of Feed	Gravity
Standard Nozzle	1.0mm
Operating Pressure	3.0-4.0bar
Pattern Width	110-160mm
Air Consumption	100-170 L/m
Air inlet	1/4"
Paint Capacity	125cc
Ipc Pressure controller	

DESCRIPTIONS

- Aluminum forged gun body with precise machined air cap set.
- Stainless steel needle and nozzle accommodate a variety of coating.
- Even better surface quality for spotless finish.
- Ensure excellent painting results.
- Great for Automobile finish painting

COMPONENT PARTS



- 1. PLASTIC CONTAINER (600 ml / 125 ml)
- 2. AIR INLET
- 3. PRESSURE GAUGE
- 4. AIR INLET
- 5. AIR VOLUME CONTROL KNOB
- 6. TRIGGER
- 7. STAINLESS STEEL NOZZLE

IMPORTANT SAFETY INSTRUCTIONS

- For toxic vapors produced by spraying certain materials can create intoxication and serious damage to health. Always wear safety glasses, gloves and respirator to prevent toxic vapor hazard, solvent and painting paint coming into contact your eyes or skin.
- Never use oxygen, combustible or any other bottle gas as a power source or would cause explosion and serious personal injury.
- Fluid and solvent can be highly flammable or combustible. Use in well-ventilated spray booth and avoid any ignition sources, such as smoking, open flames and decrial hazard.
- Disconnect tool from air supply hose before doing tool maintenance and during non-operation, for emerge stop and prevention of unintended operation, a ball valve the gun to air supply is recommend.
- Use clean, dry and regulate compressed air rated at 2.0bar, never exceed maximum permissive operating pressure.
- Never use homogenate hydrocarbon solvent, which can chemically react with aluminum zinc parts and chemically compatible with aluminum and zinc pats.
- Never point gun at you and others at any time.
- Before operating the tool, make sure all the screws & caps are securely tightened in case of leaking;
- Before painting, make inspection for free movement of trigger and nozzle to insure tool can operate well.
- Never modify this tool for any applications. Only use parts, nozzles and accessories

recommended and accessories recommended by manufactures.

OPERATING INSTRUCTIONS

- This tool applies to operate on clean, dry and compressed air at regulated pressure at 2.0bar. Too low or too high pressure is not allowed.
- Check and replace any damaged or worn parts on the tool, make sure the trigger and nozzle can operate well.
- Connect the gun to air supply, fluid cap, container and air hose should be connected tightly with spray gun.
- When painting, Grip the gun keeping perpendicular with spraying area then move it parallel for several times, the trigger should be locked before the stroke ended. Keep the appropriate distance of 6-8 inches between gun and raying

ADJUSTMENT

The desired pattern, volume of fluid output and fine atomization can easily be obtained by regulating the Pattern Adjusting Knob, Fluid Adjusting Knob and Air Adjusting Knob.

Adjusting pattern: Turning Pattern Adjusting Knob to the right until tight will make spray pattern round, or turning it left, will make spray pattern ellipse.

Adjusting volume of fluid output: Turn the Fluid Adjusting Knob, clockwise will reduce the volume of fluid output and counter-clockwise will increase fluid output.

Adjusting air volume: Turning the Air Adjusting valve clockwise will reduce the air volume. And counter-clockwise will increase the air volume.

MAINTENANCE

Pour remaining paint into other container and then clean paint passage and air cap. Spray a small amount thinner to clean passage. Incomplete cleaning will cause adverse pattern sharp and particles. Clean other sections with attached brush, soaked with thinner soft clothes.

CAUTION

Never use the wire or other hard thing to dig nozzle, fluid needle, this will cause the damage of them. Never immerse spray gun completely in thinner or solvent. When reassembly, always clean parts to prevent the sticking of dust.

TROUBLESHOOTING

The following chart lists common issues and solutions. Please read it carefully and follow all instructions closely

WARNING

Potential hazard that could result in serious injury or loss of life.

- If any of the following symptoms appear while the tool is in use, turn it off and disconnect it from the air supply immediately. Failure to heed this warning could **result in** serious personal injury.
- Disconnect the electrical plug and air supply from the tool before making any adjustments.
- Repairs must be performed by a qualified service technician only.



Symptom	Problems	Solution
Fluttering or spitting	<ol style="list-style-type: none"> 1. Material in container is litter. 2. Dry or worn Needle packing set. 3. Fluid nozzle loose or worn 	<ol style="list-style-type: none"> 1. Add material into container. 2. Lubricate or replace Needle packing set. 3. Tighten or replace Fluid nozzle.
Pattern is arc.	<ol style="list-style-type: none"> 1. Worn or loose Fluid nozzle. 2. Material build up on Air cap. 	<ol style="list-style-type: none"> 1. Tighten or replace Fluid nozzle. 2. Remove obstructions from holes, but don't use metal objects to clean it.
Pattern is not evenly spread.	<ol style="list-style-type: none"> 1. Material build up on Air cap. 2. Fluid nozzle dirty or worn. 	<ol style="list-style-type: none"> 1. Clean or replace Air cap. 2. Clean or replace Fluid nozzle.
The center of Pattern too narrow.	<ol style="list-style-type: none"> 1. Material too thin or not enough. 2. Atomization air pressure too high. 	<ol style="list-style-type: none"> 1. Regulate material viscosity. 2. Reduce air pressure.
Pattern width of fan-sharp is not enough.	<ol style="list-style-type: none"> 1. Material too thick. 2. Atomization air pressure too low. 	<ol style="list-style-type: none"> 1. Regulate material viscosity. 2. Increase air pressure.
Air leakage from air cap when trigger is not pressed	<ol style="list-style-type: none"> 1. Air inlet valve or seat is contaminated. 2. Inlet valve stem is stuck. 3. Air inlet valve or seat is worn or damaged. 4. Air inlet spring is broken. 5. Inlet valve stem is bent. 	<ol style="list-style-type: none"> 1. Lubricate the inlet valve stem. 2. Clean the air inlet valve or seat. 3. Replace air inlet valve or seat. 4. Replace air inlet spring. 5. Replace inlet valve stem.
Fluid leakage from packing nut	<ol style="list-style-type: none"> 1. Packing nut is loose. 2. Packing is worn or dry. 	<ol style="list-style-type: none"> 1. Tighten, but do not restrict the needle movement. 2. Replace or lubricate (non-silicone oil).
Excessive overspray	<ol style="list-style-type: none"> 1. Atomization pressure is too high. 2. Work surface is too far. 3. Improper stroking (arcing, gun motion are too fast). 	<ol style="list-style-type: none"> 1. Reduce the air pressure. 2. Adjust to proper distance. 3. Move at moderate pace, parallel to work surface.
No spray	<ol style="list-style-type: none"> 1. No pressure in gun. 2. Fluid control is not properly opened. 3. Fluid is too thick or heavy. 	<ol style="list-style-type: none"> 1. Check air lines. 2. Open the fluid control. 3. Thin the fluid or change to pressure feed system.

WARRANTY STATEMENT

JCB Power Tools are guaranteed against manufacturing defects for 3 year. Proof of purchase required. This does not affect your statutory rights.

To register your JCB Power Tool, please visit: jcb-tools.com

Warranty cover commences from the date of purchase on the retail sales receipt and is valid only for JCB Tools products bearing the CE and UKCA mark and a visible serial number.

In the unlikely event your JCB Power Tool is subject to a manufacturing fault within the warranty period, JCB Tools may repair the product by replacing defective parts free of charge at our discretion. In the event parts are irreplaceable JCB Tools may replace your product free of charge. The original product will remain the property of JCB Tools in this situation.

The above repair or replacement of products will be undertaken providing that:

- › The product has been subject to fair wear and tear only.
- › The product has not been subject to accidental or cosmetic damage.
- › The product has not been misused and has been used only in accordance with the instruction manual provided.
- › The product has not been subject to overload or insufficient servicing and maintenance.
- › The product has not been subject to any abnormal environmental conditions or inappropriate operating conditions.
- › Repairs have not been attempted by an unauthorised person and no modifications have been made to the product.
- › Repairs have not been undertaken using non-genuine spare parts.

JCB Power Tools used for Hire Fleets or as part of B2B and Service Contracts are not covered by these terms and conditions.



JCB Tools 3 Year Warranty excludes the following (where applicable):

- › Components normally subject to wear such as carbon brushes.
- › Batteries, Chucks and Chargers.
- › Accessories and consumable items.
- › Cases and tool storage products.

If your product develops a fault within 30 days of purchase, return it to the retailer where it was purchased together with your sales receipt. If a product develops a fault after 30 days a warranty claim must be submitted.

JCB TOOLS WILL NOT BE LIABLE FOR ANY INJURIES OR CONSEQUENTIAL DAMAGES RESULTING FROM USE OF THIS PRODUCT.



EU DECLARATION OF CONFORMITY				UK DECLARATION OF CONFORMITY
1.	PRODUCT(S) COVERED BY THIS DECLARATION:	Product: UK Product Code No. EU Product Code No. Factory Reference No.	3 PIECE AIR SPRAY GUN KIT R8826(H827.H2000) R8826(H827.H2000) R8826(H827.H2000)	Batch/PO No, RP220718-HB-2
2.	IDENTIFICATION DETAILS OF MANUFACTURER:	Name: Address: Country:	Yellow and Black Tools Ltd. (T/A: JCB Tools) Unit 55 Romsey Industrial Estate, Greatbridge Road Romsey, Hampshire SO51 0HR UK	
	AUTHORISED REPRESENTATIVE:	Name: Address: Country:	Trade House Forsage Instrument Pol. Sp. z o. o., 15-561, Grodecka IA, Biakystok, Polska. Poland	
3. THIS DECLARATION OF CONFORMITY IS ISSUED UNDER THE SOLE RESPONSIBILITY OF THE MANUFACTURER				
4.	OBJECT OF THE DECLARATION:	Product: Function:	3 PIECE AIR SPRAY GUN KIT Spray paint or varnish using air pressure to apply it or spread it on a surface	
5i.	THE OBJECT OF THE DECLARATION DESCRIBED IN POINT 4 IS IN CONFORMITY WITH THE RELEVANT UNION HARMONISATION LEGISLATION:	2006/42/EC	The Machinery Directive	
5ii.	THE OBJECT OF THE DECLARATION DESCRIBED IN POINT 4 IS IN CONFORMITY WITH THE RELEVANT UK STATUTORY INSTRUMENTS:	2008 No. 1597	The Supply of Machinery (Safety) Regulations 2008	
6.	REFERENCES TO THE RELEVANT HARMONISED SAFETY STANDARDS USED OR REFERENCES TO THE OTHER TECHNICAL SPECIFICATIONS IN RELATION TO WHICH CONFORMITY IS DECLARED:	EN 1953:2013	Atomising and spraying equipment for coating materials	
7.	ADDITIONAL INFORMATION. THE TECHNICAL DOCUMENTATION FOR THE MACHINERY IS AVAILABLE FROM:	Name: Address: Country:	N/A	
SIGNED FOR AND ON BEHALF OF:		YELLOW AND BLACK TOOLS LTD. ROMSEY, UK. 12/06/2023 JAMES BINGHAM OPERATIONS DIRECTOR 		
PLACE OF ISSUE:				
DATE OF ISSUE:				
NAME:				
FUNCTION:				
SIGNATURE:				



EU IMPORTER:

Trade House Forsage Instrument Pol.
Sp. z o. o. 15-561, Grodecka 1A, Biakystok, Polska.
www.thforsage.eu

EAC CE



DOWNLOAD YOUR INSTRUCTION MANUAL

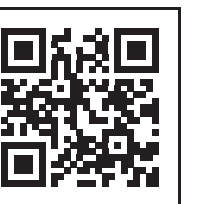
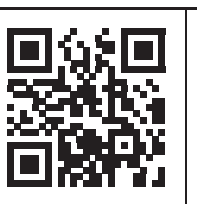
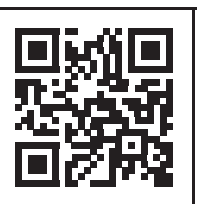
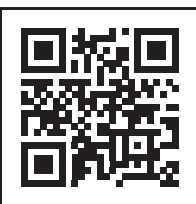
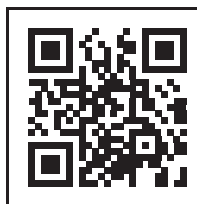
AE

BG

DE

ES

FR



HU

PL

RU

TR

