

## R803 I K6 (RP8037-2, RP8033-1)

Original Instructions

# GENERAL WARNINGS & DISPOSAL



To reduce the risk of injury, the user must read the instruction manual.



This symbol is used throughout this manual to warn the user about potential risks. Please read & understand these sections before using the device.



Caution! Wear ear-muffs. The impact of noise can cause damage to hearing.



Caution! Wear protective safety gloves.



Caution! Wear safety goggles. Sparks generated during working or splinters, chips and dust emitted by the device can cause loss of sight. wood and other materials. Never use the device to work on any materials containing asbestos!



Caution! Wear a breathing mask. Dust which is injurious to health can be generated when working on wood and other materials. Never use the device to work on any materials containing asbestos!

The month and year of manufacture can be found within the product serial number e.g. MMYYPXXAXXXXXX. Where production month (MM) and production year (YY) are included.

# Contents

INTRODUCTION	4
SPECIFICATION	4
COMPONENT PARTS	4
COMPRESSED AIR REQUIREMENTS	5
GENERAL SAFETY RULES	6
WORK ENVIRONMENT	6
USE OF AIR POWERED TOOLS	6
TRANSPORT & STORAGE	6
OPERATION	7
CONNECTING THE AIRLINE	7
DISCONNECTING THE AIR SUPPLY	7
MAINTENANCE	7
PERFORMANCE	7
WARRANTY STATEMENT	8-9
DECLARATION OD CONFORMITY	10



## INTRODUCTION

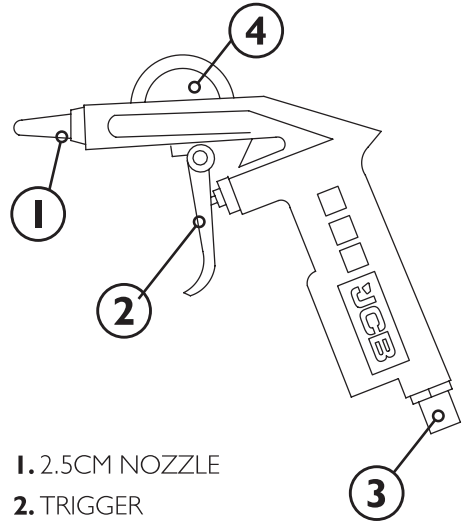
For your safety, please read this manual before using any lifting equipment ensuring you fully understand its operation and the safety procedures to be observed. Ensure this manual is retained for future reference and that new users of this product read and understand the content before they use the product.

## SPECIFICATION

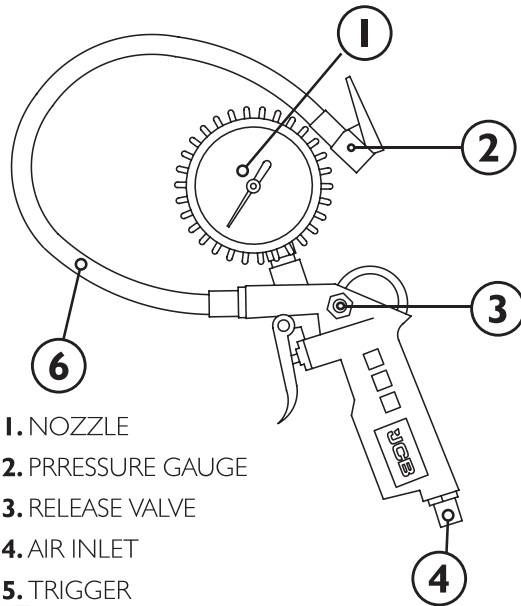
<b>RP8033-1</b>	
Air Inlet Size	1/4"
Max. Working Pressure:	6.3 bar (90psi)
L-150mm	
1 x 1/4" Female Connector	

<b>RP8037-2</b>	
Max. Operating pressure	0 - 8,5 bar
Lenght of hose	350 mm
Weight	0,40 kgs
Air inlet size	1/4"

## COMPONENT PARTS



1. 2.5CM NOZZLE
2. TRIGGER
3. AIR INLET
4. HANGING EYE



1. NOZZLE
2. PRRESSURE GAUGE
3. RELEASE VALVE
4. AIR INLET
5. TRIGGER
6. EXTENDED RUBBER HOSE

# COMPRESSED AIR REQUIREMENTS

## WARNING!

Compressed air can be dangerous. Ensure that you are familiar with all precautions relating to the use of compressors and compressed air.

Use only clean, dry, regulated compressed air as a power source.

A build-up of moisture or oil in the air compressor will accelerate wear and corrosion in the tool. Ensure any moisture is drained from the compressor daily and the inlet filter is kept clean.

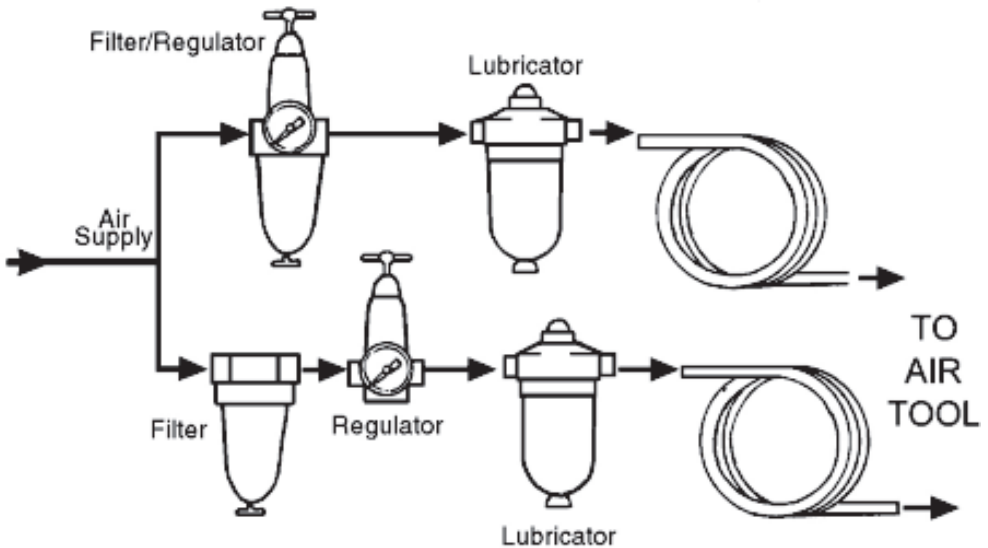
If an unusually long air hose is required, (over 8 metres), the line pressure or the hose inside diameter may need to be increased.

The air hose must be rated at least 150% of the maximum operating pressure of the air tool.

A typical air line layout is shown below. If an automatic in-line filter/regulator is used, it will keep the air tool in good condition, but should be regularly checked.

For optimum performance it is recommended that a 3/8" ID hose is used.

DO NOT exceed the maximum operating pressure. It is recommended that air pressure does not exceed 90 psi (6.2 bar). Higher pressures and dirty air will shorten the life of the blow gun due to faster wear and is a possible safety hazard.



## GENERAL SAFETY RULES

### WARNING!

Failure to follow these precautions could result in personal injury and/or damage to property

## WORK ENVIRONMENT

1. ALWAYS keep the work area clean and tidy.
2. ALWAYS dress appropriately - Do not wear loose clothing or jewellery. Tie long hair out of the way.
3. ALWAYS keep children and visitors away - Do not let children handle the blow gun.
4. DO NOT operate the blow gun where there are flammable liquids or gases.

## USE OF AIR POWERED TOOLS

1. ALWAYS stay alert and use common sense - do not operate this blow gun when you are tired or under the influence of alcohol, drugs or medication.
2. ALWAYS wear eye protectors when using the blow gun. Eye protectors must provide protection from flying particles from the front and the side.
3. DO NOT use the blow gun when other persons or animals are nearby or may be hit by flying debris caused by the blow gun.
4. DO NOT overreach - Keep proper footing and balance at all times.
5. DO NOT use oxygen, CO<sub>2</sub>, combustible gasses or any type of bottled gas as a source of power for this blow gun.
6. DO NOT connect the air hose with your finger on the trigger.

7. DO NOT exceed the maximum pressure of 90 psi / 6.2 bar.
8. ALWAYS keep the air hose away from heat, oil and sharp edges.
9. DO NOT fit the blow gun to any stand or clamping device that may damage it.
10. ALWAYS check air hoses for leaks or worn condition before use and ensure that all connections are secure.
11. DO NOT use the blow gun for any purpose than that described in this manual.
12. DO NOT discharge this blow gun at any persons or animals.
13. DO NOT insert into any part of yours or anyone else's body.
14. DO NOT point directly at a person's skin or at a fire.
15. DO NOT carry out any alterations or modifications to the blow gun.
16. ALWAYS disconnect from the air supply when performing maintenance.
17. DO NOT use the blow gun if it is defective or operating abnormally.
18. ALWAYS maintain the blow gun with care. Keep it clean for the best and safest performance.

## TRANSPORT & STORAGE

1. DO NOT carry the blow gun by the air hose or with your finger on the trigger.
2. When not in use the blow gun must be disconnected from the air supply and stored in a dry place out of the reach of children.
3. Avoid storing a blow gun where the temperature is below 0oC.

## OPERATION

### CONNECTING THE AIRLINE

Ensure the air supply is isolated from the airline at a shut-off valve.

1. Connect a suitable hose to the air inlet connector as shown.
2. Connect the other end of the air hose to the air compressor.
3. Set the compressed air pressure to suit the task at the airline regulator.
4. Turn on the air supply and check for air leaks. Rectify any found before proceeding.
  - PTFE tape may be useful for sealing threaded connections.
5. Your blow gun is now ready for use.

### DISCONNECTING THE AIR SUPPLY

1. Do not disconnect the airline until the supply is isolated at a shut-off valve.
2. Once the pressure has been isolated, disconnect the air supply hose from the blow gun.
3. Shut down the compressor at the end of the work session.

## MAINTENANCE



### WARNING!

Make sure that the blow gun is disconnected from the air supply before any cleaning or maintenance.

1. Before use, drain any condensate from the airline filter and compressor.
2. Clean thoroughly after use with a suitable solvent.

## PERFORMANCE

Please note that factors other than the air tool may affect its operation and efficiency such as reduced compressor output, excessive drain on the airline, moisture or restrictions in the air-line, or the use of connectors of improper size or poor condition which will reduce air supply.

Your JCB air tool has been designed to give long and trouble free service. If, however, having followed the instructions in this booklet carefully, you encounter problems, take the unit to your local JCB dealer.



# WARRANTY STATEMENT

**JCB Power Tools are guaranteed against manufacturing defects for 3 year. Proof of purchase required. This does not affect your statutory rights.**

**To register your JCB Power Tool, please visit: [jcb-tools.com](http://jcb-tools.com)**

Warranty cover commences from the date of purchase on the retail sales receipt and is valid only for JCB Tools products bearing the CE and UKCA mark and a visible serial number.

In the unlikely event your JCB Power Tool is subject to a manufacturing fault within the warranty period, JCB Tools may repair the product by replacing defective parts free of charge at our discretion. In the event parts are irreplaceable JCB Tools may replace your product free of charge. The original product will remain the property of JCB Tools in this situation.

**The above repair or replacement of products will be undertaken providing that:**

- › The product has been subject to fair wear and tear only.
- › The product has not been subject to accidental or cosmetic damage.
- › The product has not been misused and has been used only in accordance with the instruction manual provided.
- › The product has not been subject to overload or insufficient servicing and maintenance.
- › The product has not been subject to any abnormal environmental conditions or inappropriate operating conditions.
- › Repairs have not been attempted by an unauthorised person and no modifications have been made to the product.
- › Repairs have not been undertaken using non-genuine spare parts.

JCB Power Tools used for Hire Fleets or as part of B2B and Service Contracts are not covered by these terms and conditions.



**JCB Tools 3 Year Warranty excludes the following (where applicable):**

- › Components normally subject to wear such as carbon brushes.
- › Batteries, Chucks and Chargers.
- › Accessories and consumable items.
- › Cases and tool storage products.

If your product develops a fault within 30 days of purchase, return it to the retailer where it was purchased together with your sales receipt. If a product develops a fault after 30 days a warranty claim must be submitted.

JCB TOOLS WILL NOT BE LIABLE FOR ANY INJURIES OR CONSEQUENTIAL DAMAGES RESULTING FROM USE OF THIS PRODUCT.



EU DECLARATION OF CONFORMITY				UK DECLARATION OF CONFORMITY
1.	<b>PRODUCT(S) COVERED BY THIS DECLARATION:</b>	Product:	6 PIECE AIR TOOL KIT	Batch/PO No. RP220718-HB-2
		UK Product Code No.	R8031K6(R8037-2,R8031-1)	
		EU Product Code No.	R8031K6(R8037-2,R8031-1)	
		Factory Reference No.	R8031K6(R8037-2,R8031-1)	
2.	<b>IDENTIFICATION DETAILS OF MANUFACTURER:</b>	Name:	Yellow and Black Tools Ltd. (T/A: JCB Tools)	
		Address:	Unit 55 Romsey Industrial Estate, Greatbridge Road Romsey, Hampshire SO51 0HR UK	
	<b>AUTHORISED REPRESENTATIVE:</b>	Name:	Trade House Forsage Instrument Pol.	
		Address:	Sp, z o, o, 15-561, Grodecka 1A, Biakystok, Polska.	
		Country:	Poland	
3. THIS DECLARATION OF CONFORMITY IS ISSUED UNDER THE SOLE RESPONSIBILITY OF THE MANUFACTURER				
4.	<b>OBJECT OF THE DECLARATION:</b>	Product:	6 PIECE AIR TOOL KIT	
		Function:	Inflator gun: Testing tire pressure, inflating & deflating tire Air Duster Gun: BLOW AWAY DUST	
5i.	<b>THE OBJECT OF THE DECLARATION DESCRIBED IN POINT 4 IS IN CONFORMITY WITH THE RELEVANT UNION HARMONISATION LEGISLATION:</b>	2006/42/EC	The Machinery Directive	 
5ii.	<b>THE OBJECT OF THE DECLARATION DESCRIBED IN POINT 4 IS IN CONFORMITY WITH THE RELEVANT UK STATUTORY INSTRUMENTS:</b>	2008 No. 1597	The Supply of Machinery (Safety) Regulations 2008	
6.	<b>REFERENCES TO THE RELEVANT HARMONISED SAFETY STANDARDS USED OR REFERENCES TO THE OTHER TECHNICAL SPECIFICATIONS IN RELATION TO WHICH CONFORMITY IS DECLARED:</b>	EN 1953:2013	Atomising and spraying equipment for coating materials - Safety requirements	
		EN ISO 12100:2010	specifies basic terminology, principles and a methodology for achieving safety in the design of machinery. It specifies principles of risk assessment and risk reduction to help designers in achieving this objective.	
7.	<b>ADDITIONAL INFORMATION, THE TECHNICAL DOCUMENTATION FOR THE MACHINERY IS AVAILABLE FROM:</b>	Name:	N/A	
		Address:		
		Country:		
<b>SIGNED FOR AND ON BEHALF OF:</b>		<b>YELLOW AND BLACK TOOLS LTD.</b> <b>ROMSEY, UK.</b> <b>12/06/2023</b> <b>JAMES BINGHAM</b> <b>OPERATIONS DIRECTOR</b> 		
<b>PLACE OF ISSUE:</b>				
<b>DATE OF ISSUE:</b>				
<b>NAME:</b>				
<b>FUNCTION:</b>				
<b>SIGNATURE:</b>				



**EU IMPORTER:**

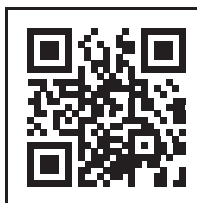
Trade House Forsage Instrument  
Pol. Sp. z o.o. 15-561, Gródecka 1A,  
Białystok, Polska.

# EAC CE

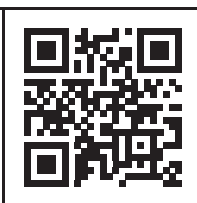


**DOWNLOAD YOUR INSTRUCTION MANUAL**

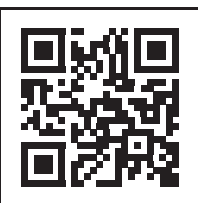
**AE**



**BG**



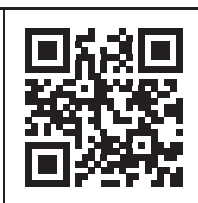
**DE**



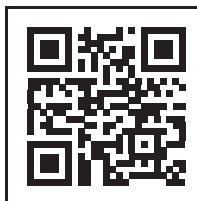
**ES**



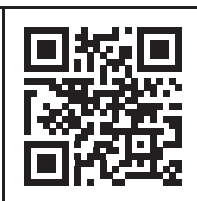
**FR**



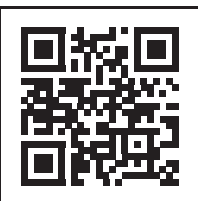
**HU**



**PL**



**RU**



**TR**

